

First Responder Action

(Bangladesh Experience)

Dr. Ashutosh Sutra Dhar
Associate Professor
Department of Civil Engineering, BUET

Last Mile Hazard Warning Dissimulation
Workshop

1

Questions?

- ❖ Do warnings reach all of those at risk?
- ❖ Are the risks and the warnings understood?
- ❖ Is the warning information clear and useable?
- ❖ Does it address All-Hazards?
- ❖ Is their ongoing measurement for upgrade?

Last Mile Hazard Warning Dissimulation Workshop

2

Multi-Hazards in Bangladesh

REGION	HAZARDS
North West	Floods, Heavy Rains, Cold Weather
North	Floods, Heavy Rains, Cold Weather, Drought
South West	Cyclone, Floods, Heavy Rains, Epidemics, River Bank Erosion
South	Cyclone, Floods, Heavy Rains, Epidemics, River Bank Erosion , Tsunami
South East	Cyclone, Floods, Storm Surge, Heavy Rains, Epidemics, Refugee Influx , Earthquake, Tsunami

Cyclone, Floods, Storm Surge, Heavy Rains, Epidemics, River Bank Erosion, Earthquakes, Tsunami

Last Mile Hazard Warning Dissimulation Workshop

3

Overview of Warning System in Bangladesh

- BMD (MoFDM) is responsible
 - for generating the warning for all hazards
 - disseminating through public media and preparedness units
 - follow-up at periodic intervals.
- Use the cyclone warning network for dissemination
- 1973-CPP a joint venture programme of BDRCS and MoFDM of the GoB

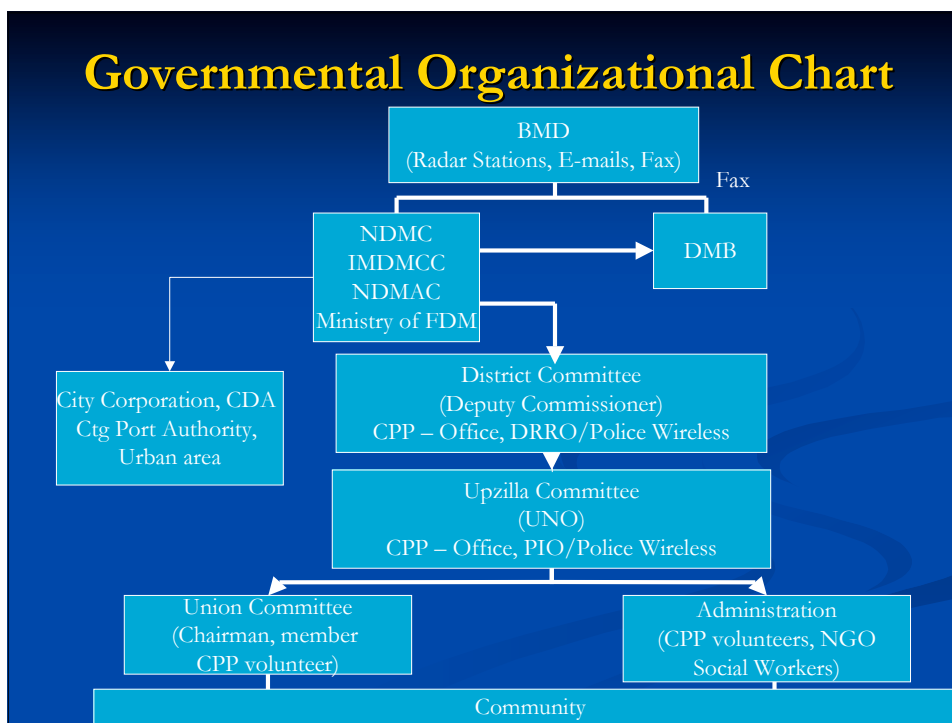
Last Mile Hazard Warning Dissimulation Workshop

4

BMD's Dissemination Network



Governmental Organizational Chart



Warning Mechanism

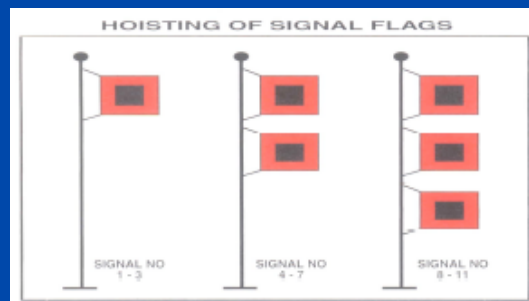
- Inherited from British India
- Warning System for Maritime Ports
 - Distance Cautionary I : Squally Weather
 - Distance Warning II: Storm Formed
 - Local Cautionary III: Port Threatened by Storm
 - Danger V-VIII: Port Will Experience Storm of Slight or Moderate Intensity
 - Great Danger IX-X: Storm of Great Intensity
 - Great Danger XI: Devastating Cyclone with Breakdown in Communication

Last Mile Hazard Warning Dissimulation Workshop

7

Warning System of River Ports

- Cautionary - I: Squally Wind
- Warning – II: Likely Storm
- Danger – III: Storm will Strike
- Great Danger - IV: Violent Storm



Last Mile Hazard Warning Dissimulation Workshop

8

Assessment of Warning System

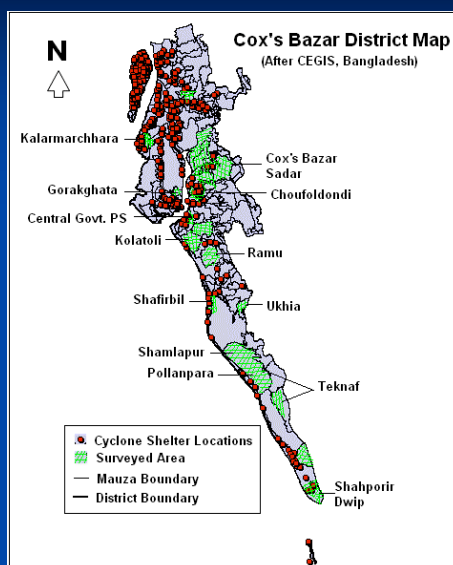
- Key Information Interview
- Rural Rapid Appraisal



Last Mile Hazard Warning Dissimulation Workshop

9

Area Surveyed

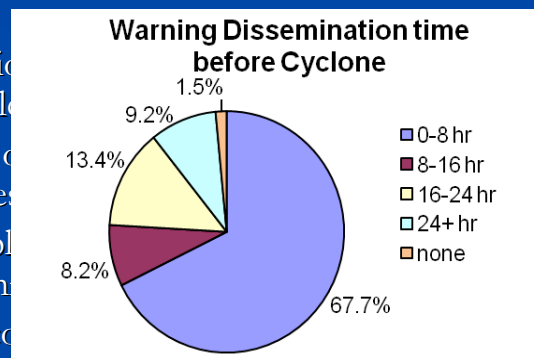


Last Mile Hazard Warning Dissimulation Workshop

10

Do Warnings reach all of those at risk?

- Warnings of cyclones of 1970, 1991 and 1997
- Very few people could remember about any warning in 1970
- In 1991, mainly radio speakers. Few people
- In 1997, more than one speaker, the activities
- Present status: people information or warn
- However, peoples co



Last Mile Hazard Warning Dissimulation Workshop

11

Are the risks and the warnings understood?

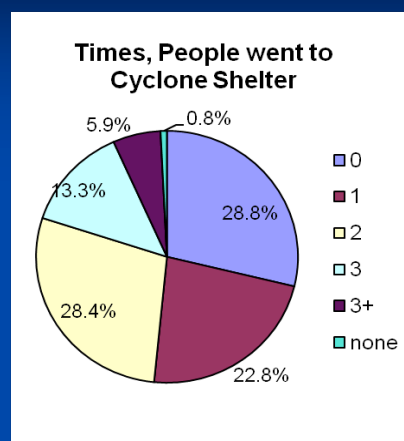
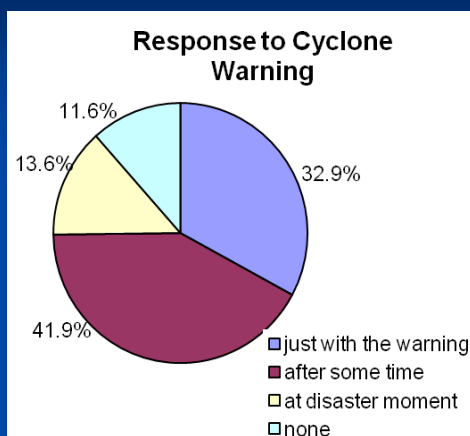
- Signal numbers inherited from British India designed for ports
- Meanings of number and severity or risk unknown (increasing numbers is indication of severity)
- Vulnerable locality is not clearly specified.
- Signaling system through hoisting flags do not give any indication about the risks implied.

Last Mile Hazard Warning Dissimulation Workshop

12

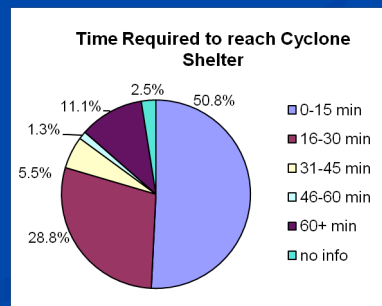
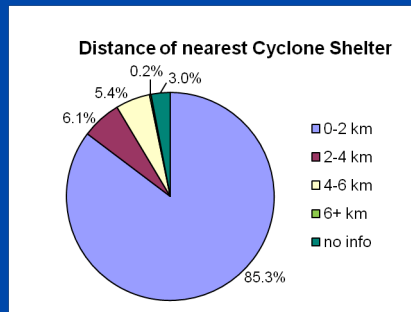
Is the warning information clear and useable?

- Warning broadcasted in formal Bangla language, which is not always understandable by the coastal people
- The language of the Bulletin cannot clarify the exact situation
- Warnings are not precise, easy to understand or simplified as per people's requirements
- Lacks peoples confidence



Does it address All-Hazards?

- Developed for cyclone, but used for others
- Applicability for earthquake and tsunami not reviewed



Last Mile Hazard Warning Dissemination Workshop

15

Is their ongoing measurement for upgrade?

- Food and Disaster Management Ministry's Comprehensive Disaster Management Programme (CDMP) has plan to upgrade.
- The Ministry has prepared a National Tsunami Risk Reduction Action Plan.

Last Mile Hazard Warning Dissemination Workshop

16

Summary

- The current warning system does not reach completely to all
- Warnings are not always clearly understood
- Warning information not always clear
- Need further evaluation for all hazards
- Up-gradation is on the plan